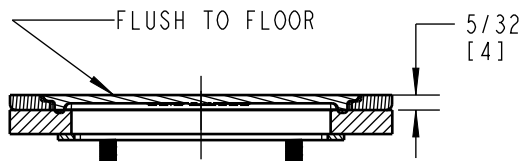
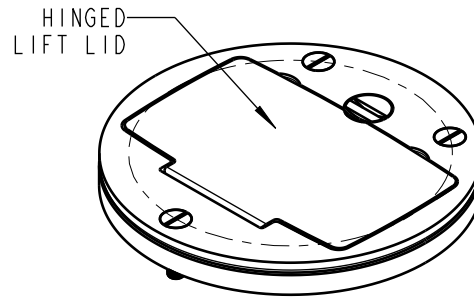
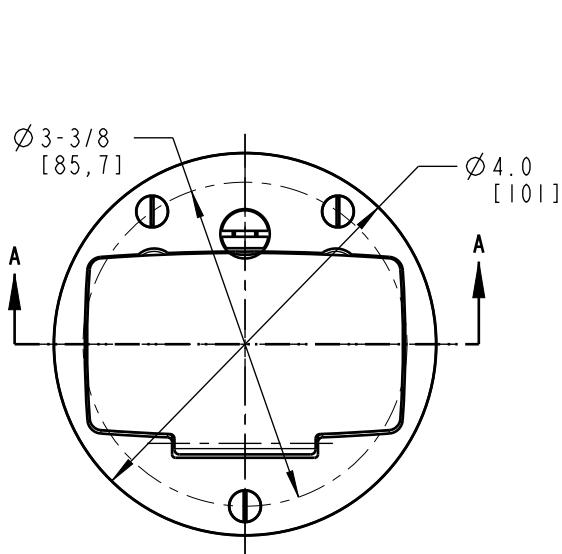


CATALOG NUMBERS:
P60-GFCI, P60GFCI-AL



SECTION A-A

FEATURES:

1. FOR USE WITH 68P, 68 AND 600 SERIES FLOOR BOXES
2. AVAILABLE IN SOLID BRASS AND ALUMINUM MATERIAL
3. FURNISHED WITH SEALING GASKET AND MATCHING 8-32 X 7/16" FLATHEAD SCREWS

CATALOG NUMBERS	MATERIAL	FINISH
P60-GFCI	SOLID BRASS	BRASS
P60GFCI-AL	ALUMINUM	ALUMINUM

GENERAL NOTES

1. ALL DIMENSIONS ARE FOR REFERENCE ONLY.
2. DIMENSIONS IN BRACKETS [] ARE IN METRIC UNITS.

REVISIONS

A	SEE ECN (****) FOR APPROVAL SIGNATURES & RELEASE DATE. PROJECT NO: ****
---	--

DESCRIPTION:

**P60-GFCI, P60-GFCI-AL
COVER PLATE, GFCI**

Thomas & Betts
A Member of the ABB Group

ORIGINAL PROJECT NO / ECN NO
003V001056 / ECN000083908

SHEET NO:
1 OF 1

REV. NO:
A

DRAWING NO:
WSD-002612